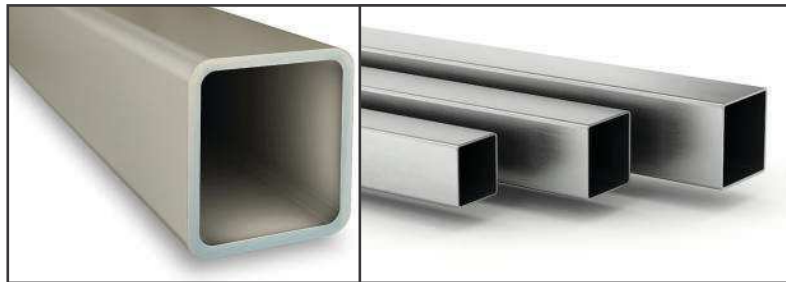
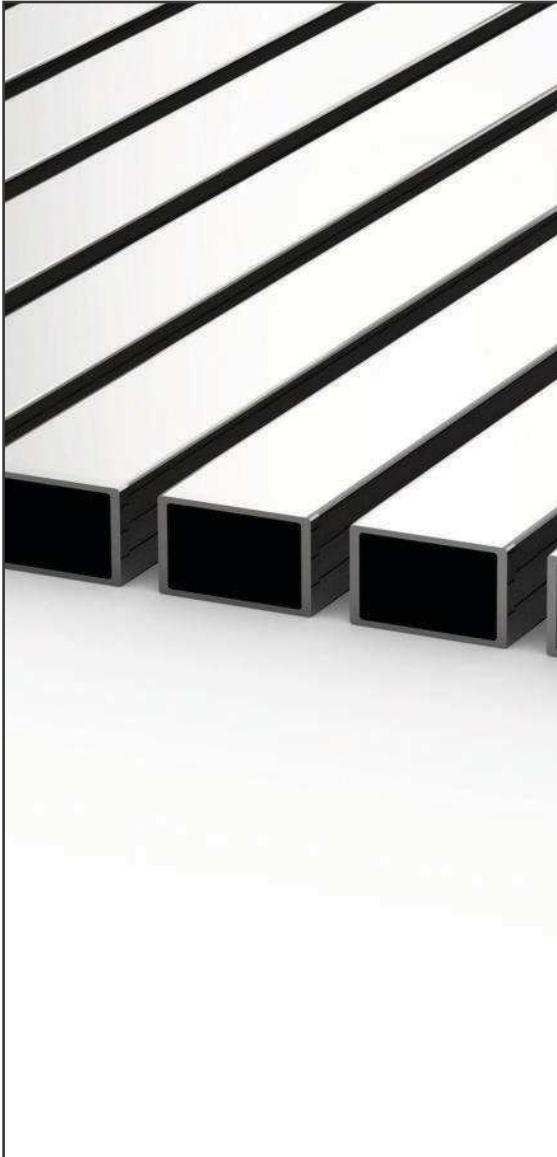


stainless is
our passion

Content

1. **Company Profile**
2. **Applications**
3. **General Information**
4. **Stainless Steel Square Hollow Sections**
5. **Stainless Steel Rectangular Hollow Sections**
6. **Stainless Steel Flat Tubes**
7. **Stainless Steel Round Tubes**
8. **Press Brake Tubes**
9. **Stainless Steel Profiles**
10. **Stainless Steel Welded I-Beams & H-Beams**





Company Profile

Raaj Tubes a unit of Raajratna Ventures Limited, an 'ISO 9001:2015, ISO 14001:2015, BS OHSAS 18001:2007' accredited company, started production of stainless steel square & rectangular hollow sections in the year 2010. Since it's beginning **Raaj Tubes** is using the technology with the team of highly skilled technicians & qualified professionals who utilize their expertise and contribute to our success in a significant manner.

Our Infrastructure is well equipped to meet our production commitment on time having production capacity of 8400 MT/ Annum which includes both Domestic & International market as well.

Every product manufactured by Raaj Tubes has been designed to the highest standards, using the best quality material and excellent craftsmanship, we are extremely proud of the quality and craftsmanship.

Each stage of the production process is stringently monitored by a team of quality control experts. The dimensional attributes & the performance of the finished products are checked in the in-house testing laboratory before they are certified as "Ready for dispatch" by our professionals.

As a result of continuous improvement in every aspect within a short span, today **Raaj Tubes** has a reputed name in the world of Stainless Steel Structural Tubes.

Certifications



Applications



General Information

CHEMICAL COMPOSITION (FULFILLS THE STANDARDS ASTM A554-16 AND EN 10088-2)												
Type Grade	EN	C Max %	Mn Max %	P Max %	S Max %	Si Max %	Cr Max %	Ni Max %	Cu Max %	Mo Max %	N Max %	Others %
304	1.4301	0.07	2	0.045	0.03	1	18.0/19.5	8.0/10.5	-	-	-	-
304L	1.4307	0.03	2	0.045	0.03	1	18.0/19.5	8.0/10.5	-	-	0.11	-
316L	1.4404	0.03	2	0.045	0.03	1	16.5/18.0	10.0/13.0	-	2.00/2.5	-	-
316Ti	1.4571	0.08	2	0.045	0.03	1	16.5/18.0	10.5/13.5	-	2.00/2.5	-	5X%Cu upto 0.8
321	1.4541	0.08	2	0.045	0.03	1	17.0/19.0	9.00/13.0	-	-	-	5X%C Min.
301LN	-	0.30	2	0.045	0.30	1	16.0/18.0	1.0/8.0	-	-	0.2	-
202, (4%Ni)	-	0.08	6.0-8.0	0.06	0.005	0.75	16.0/18.0	4.0/6.0	1.5-2.0	-	0.1	-
J4	-	0.10	8.5-10.0	0.080	0.010	0.75	15.0/16.0	1.00/2.0	1.5-2.0	-	0.2	-
LDX2101	1.4162	0.03	-	-	-	-	21.5	1.5	-	0.3	0.22	Cu:0.30
EDX2304	1.4362	0.02	-	-	-	-	23.0	4.8	-	0.3	0.1	CU
SDX2507	1.4410	0.02	-	-	-	-	25.0	7.0	-	4.0	0.27	-

*All other stainless steel grades are also available on demand.

MECHANICAL PROPERTIES (EN 10088-2)				
Type Grade	EN	Yield Strength Rp0.2 min N/mm ²	Tensile Strength Rm min N/mm ²	Elongation* min %
304	1.4301	230	540-750	45
304L	1.4307	220	520-670	45
316L	1.4404	240	530-680	40
316Ti	1.4571	240	530-680	40
321	1.4541	220	520-720	40
301LN	-	240	MIN 550	45
202 (4%Ni)	-	205	550-750	40
J4	-	325	MIN 650	40
LDX2101	1.4162	480	680	30
EDX2304	1.4362	510	750	35
SDX2507	1.4410	560	830	35

*A₉₀ when thickness < 3mm. *A₅ when thickness ≥ 3mm.

INSPECTION CERTIFICATE
EN 10204 - 3.1

*Raaj Tubes reserves the right to changes and takes no responsibility for any error in numerical information that might appear in the brochure.

Stainless Steel Square Hollow Sections

SQUARE	Weight (Kg/m) (Metric Sizes)								
	H x B (mm)	1.00	1.20	1.50	2.00	3.00	4.00	5.00	6.00
12x12	0.358	0.423	0.518	-	-	-	-	-	-
15x15	0.453	0.538	0.661	-	-	-	-	-	-
20x20	0.613	0.729	0.901	1.176	-	-	-	-	-
25x25	0.772	0.921	1.140	1.495	2.167	-	-	-	-
30x30	0.932	1.112	1.379	1.814	2.645	-	-	-	-
32x32	0.996	1.189	1.475	1.941	2.837				
38x38	1.187	1.418	1.762	2.324	3.411				
40x40	1.251	1.495	1.858	2.452	3.602	-	-	-	-
50x50	1.570	1.878	2.336	3.090	4.559	5.979	7.349	8.668	
60x60	-	2.261	2.814	3.728	5.516	7.255	8.943	10.582	
65x65	-	-	-	-	5.995	7.893	9.741	11.539	
70x70	-	-	-	-	6.473	8.531	10.538	12.496	
75x75	-	-	-	-	6.952	9.169	11.336	13.453	
80x80	-	-	-	-	7.430	9.807	12.133	14.410	
90x90	-	-	-	-	8.387	11.083	13.728	16.324	
100x100	-	-	-	-	9.344	12.359	15.323	18.237	
120x120	-	-	-	-	11.258	14.91	18.513	22.065	
125x125	-	-	-	-	11.736	15.548	19.31	23.022	
140x140	-	-	-	-	13.172	17.462	21.703	25.893	
150x150	-	-	-	-	14.129	18.738	23.298	27.807	
180x180	-	-	-	-	17.000	22.566	28.082	33.548	
200x200	-	-	-	-	18.913	25.118	31.272	37.376	

*Other intermediate dimensions are also available on request.



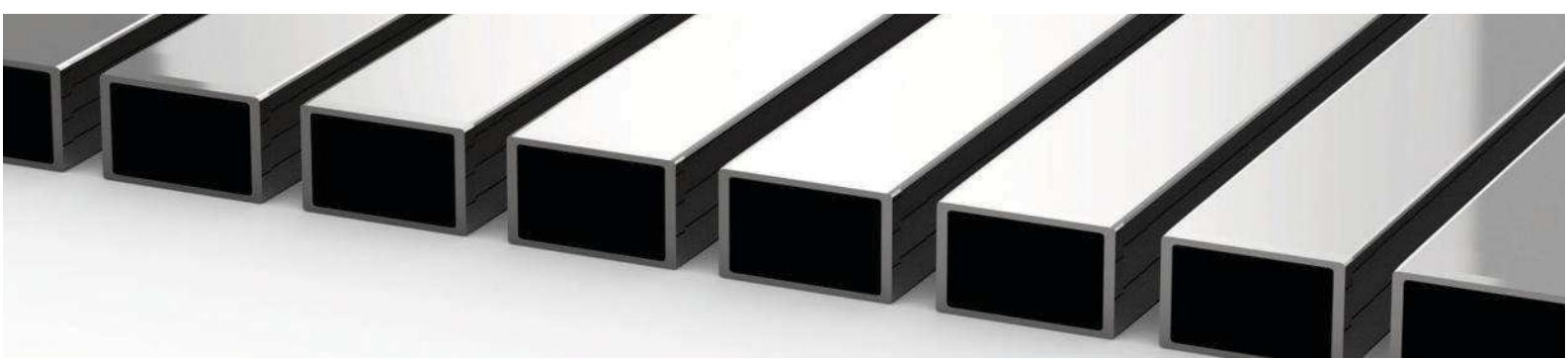
SQUARE		Weight (Lbs/ft) (Imperial Sizes)							
Imperial sizes	H x B (mm)	20 GA	18 GA	16 GA	14 GA	12 GA	11 GA	7 GA	1/4"
		0.035"	0.049"	0.065"	0.083"	0.109"	0.120"	0.180"	0.250"
		0.889 mm	1.25 mm	1.65 mm	2.11 mm	2.77 mm	3.05 mm	4.57 mm	6.35 mm
1/2"	12.70	0.231	0.313	0.403	-	-	-	-	-
5/8"	15.87	0.292	0.398	0.515	-	-	-	-	-
3/4"	19.05	0.353	0.483	0.627	0.785	-	-	-	-
1"	25.40	0.476	0.653	0.851	1.072	1.377	1.502	-	-
1-1/4"	31.75	0.598	0.823	1.075	1.359	1.753	1.916	-	-
1-1/2"	38.10	0.720	0.993	1.300	1.646	2.130	2.331	-	-
2"	50.80	-	1.333	1.748	2.219	2.883	3.160	4.618	6.226
2-1/2"	63.50	-	-	-	-	3.635	3.989	5.860	7.952
3"	76.20	-	-	-	-	4.388	4.818	7.102	9.678
3-1/2"	88.90	-	-	-	-	5.141	5.647	8.344	11.404
4"	101.60	-	-	-	-	5.894	6.476	9.586	13.130
4.5"	114.30	-	-	-	-	6.647	7.305	10.828	14.856
5"	127.00	-	-	-	-	7.400	8.134	12.070	16.582
5.5"	139.70	-	-	-	-	8.513	8.962	13.312	18.308
6"	152.40	-	-	-	-	8.906	9.791	14.554	20.033
6.5"	165.10	-	-	-	-	9.658	10.620	15.797	21.759
7"	177.8	-	-	-	-	10.411	11.449	17.039	23.485
7.5"	190.5	-	-	-	-	11.164	12.278	18.281	25.211
8"	203.2	-	-	-	-	-	13.107	19.523	26.937

*Other intermediate dimensions are also available on request.

Stainless Steel Rectangular Hollow Sections

RECTANGULAR	Weight (Kg/m) (Metric Sizes)								
	H x B (mm)	1.00	1.20	1.50	2.00	3.00	4.00	5.00	6.00
30x20	0.772	0.921	1.140	1.495	-	-	-	-	-
40x20	0.932	1.112	1.379	1.814	2.645	-	-	-	-
50x20	-	1.304	1.618	2.133	3.124	-	-	-	-
50x25	-	1.399	1.738	2.292	3.363	-	-	-	-
50x30	1.251	1.495	1.858	2.452	3.602	-	-	-	-
60x20	1.251	1.495	1.858	2.452	3.602	-	-	-	-
60x30	-	1.686	2.097	2.771	4.081	-	-	-	-
60x40	-	1.878	2.336	3.090	4.559	5.979	-	-	-
80x20	-	1.878	2.336	3.090	4.559	-	-	-	-
80x40	-	-	2.814	3.728	5.516	7.255	-	-	-
80x60	-	-	-	-	6.473	8.531	10.538	12.496	-
100x50	-	-	3.532	4.685	6.952	9.169	11.336	13.453	-
100x40	-	-	3.293	4.366	6.473	8.531	10.538	12.496	-
100x80	-	-	-	-	8.387	11.083	13.728	16.324	-
120x60	-	-	-	-	8.387	11.083	13.728	16.324	-
120x80	-	-	-	-	9.344	12.359	15.323	18.237	-
140x80	-	-	-	-	10.301	13.635	16.918	20.151	-
150x50	-	-	-	-	9.344	12.359	15.323	18.237	-
150x100	-	-	-	-	11.736	15.548	19.310	23.022	-
160x80	-	-	-	-	11.258	14.910	18.513	22.065	-
200x50	-	-	-	-	11.736	15.548	19.310	23.022	-
200x100	-	-	-	-	14.129	18.738	23.298	27.807	-
200x150	-	-	-	-	16.521	21.928	27.285	32.592	-
250x150	-	-	-	-	18.913	25.118	31.272	37.376	-
300x100	-	-	-	-	18.913	25.118	31.272	37.376	-

*Other intermediate dimensions are also available on request.



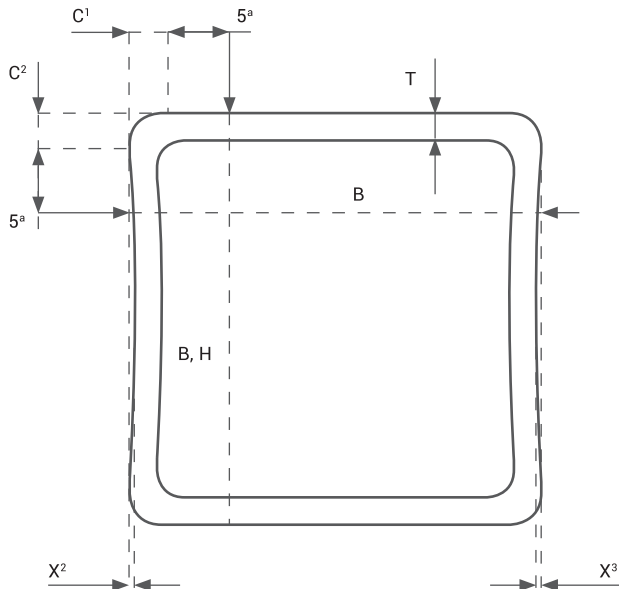
RECTANGULAR		Weight (Lbs/ft) (Imperial Sizes)							
Imperial sizes	H x B (mm)	20 GA	18 GA	16 GA	14 GA	12 GA	11 GA	7 GA	1/4"
		0.035"	0.049"	0.065"	0.083"	0.109"	0.120"	0.180"	0.250"
		0.889 mm	1.25 mm	1.65 mm	2.11 mm	2.77 mm	3.05 mm	4.57 mm	6.35 mm
1/2" X 3/4"	12.70 x 19.05	0.292	0.397	0.516	-	-	-	-	-
1/2" X 1"	12.70 x 25.40	0.353	0.482	0.628	-	-	-	-	-
1/2" X 1-1/2"	12.70 x 38.10	0.476	0.651	0.853	1.072	-	-	-	-
1/2" X 2"	12.70 x 50.80	0.598	0.821	1.077	1.359	-	-	-	-
3/4" X 1-1/4"	19.05 x 31.75	0.476	0.651	0.853	1.072	1.378	-	-	-
3/4" X 1-1/2"	19.05 x 38.10	0.537	0.736	0.965	1.216	1.566	-	-	-
1" X 1-1/2"	25.40 x 38.10	0.598	0.821	1.077	1.359	1.755	1.917	-	-
1" X 2"	25.40 x 50.80	-	0.990	1.302	1.646	2.131	2.332	-	-
1" X 3"	25.40 x 76.20	-	1.329	1.751	2.219	2.885	3.161	-	-
1-1/4" X 2"	31.75 x 50.80	-	1.075	1.414	1.789	2.320	2.539	-	-
1-1/2" X 2"	38.10 x 50.80	-	1.160	1.526	1.933	2.508	2.746	-	-
2" X 3"	50.80 x 76.20	-	-	-	2.793	3.638	3.990	5.868	7.952
2" X 4"	50.80 x 101.60	-	-	-	3.367	4.391	4.820	14.910	9.688
2" X 6"	50.80 x 152.40	-	-	-	-	5.894	6.476	9.586	13.130
2" X 8"	50.80 x 203.20	-	-	-	-	7.400	8.134	12.070	16.582
3" X 4"	76.20 x 101.60	-	-	-	-	5.141	5.647	8.344	11.404
3" X 6"	76.20 x 152.40	-	-	-	-	6.647	7.305	10.828	14.856
4" X 6"	101.60 x 152.40	-	-	-	-	7.400	8.134	12.070	16.582
4" X 8"	101.60 x 203.20	-	-	-	-	8.906	9.791	14.554	20.033
4" X 10"	101.60 x 254	-	-	-	-	-	11.449	17.039	23.485
4" X 12"	101.6 x 304.8	-	-	-	-	-	13.107	19.523	26.937
6" X 8"	152.40 x 203.20	-	-	-	-	10.411	11.449	17.039	23.485
6" X 10"	152.40 x 254	-	-	-	-	-	13.107	19.523	26.937

*Other intermediate dimensions are also available on request.

TOLERANCES (according to EN 10219-2)

Characteristic	Tolerance
Outside dimensions, B and H	$\pm 1\%$ with a minimum of ± 0.5 mm, when $B, H < 100$ mm $\pm 0.8\%$, when $100 \text{ mm} \leq B, H \leq 200$ mm $\pm 0.6\%$, when $B, H > 200$ mm
Concavity/Convexity (X^1/X^2)	Max. 0.8% with a minimum of 0.5 mm
Wall thickness, T	$\pm 10\%$, when $T \leq 5$ mm $\pm 0.5\text{mm}$, when $T \geq 5$ mm
Squareness of sides	$90^\circ \pm 1^\circ$
External corner profile, C1, C2 or R(1)	Maximum 1.5T, when $T \leq 3$ mm and $B, H \leq 100$ mm 1.6T - 2.4T, when $T > 3$ mm and $B, H \leq 100$ mm 2T - 3T, when $T \leq 4$ mm and $B, H > 100$ mm
Length, L(2)	Standard length 6000 mm, tolerance -0/+20 mm
Straightness	0.15% of total length
Twist	2 mm + 0.5 mm/m
Weld position	Narrow side in Rectangular hollow section

(1) Exception from standard
(2) Better than standard Length tolerance 0/+ 50 mm



*This dimensions is maximum when measuring B or H and minimum when measuring T



Stainless is our
Passion

Stainless Steel Flat Tubes

RECTANGULAR		Weight (Kg/m) (Metric Sizes)			
H x B (mm)		1.00	1.20	1.50	2.00
20	10	0.453	0.538	0.661	0.857
30	10	0.613	0.729	0.901	1.176
40	10	0.772	0.921	1.140	1.495
50	10	0.932	1.112	1.379	1.814
70	10	-	1.495	1.858	2.452
80	10	-	1.686	2.097	2.771
90	10	-	1.878	2.336	3.090
100	20	-	2.261	2.814	3.728

MANUFACTURING PROCESS	
Forming	Cold formed
Welding process	TIG, Plazma, TIG-Plazma-TIG
Weld condition	External weld bead removed

TUBE MARKING	
Ink-jet marking on tube	Raaj Tubes, grade, dimensions Heat number, length, Made in India
Bundle tag	Dimensions, length, grade, surface condition, bundle number, total meters

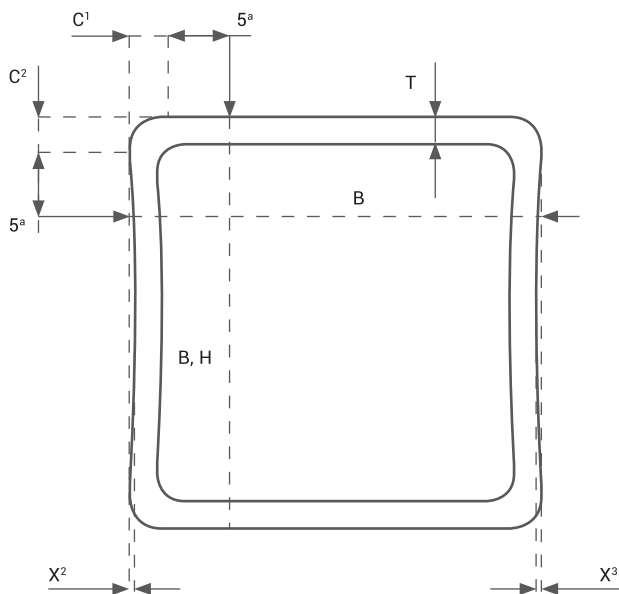
AVAILABLE SURFACE CONDITION
Mill Finish, 180 Grit, 220 Grit, 320 Grit, 400 Grit, 600 Grit



TOLERANCES (According to EN 10219-2)

Characteristic	Tolerance
Outside dimensions, B and H	$\pm 1\%$ with a minimum of ± 0.5 mm, when B, H < 100 mm
Concavity/Convexity (X^1/X^2)	Max. 0.8% with a minimum of 0.5 mm
Wall thickness, T	$\pm 10\%$, when $T \leq 2$ mm
Squareness of sides	$90^\circ \pm 1^\circ$
External corner profile, C1, C2 or R(1)	Maximum 1.5T, when $T \leq 3$ mm and B, H ≤ 100 mm
Length, L(2)	Standard length 6000 mm, tolerance -0/+20 mm
Straightness	0.15% of total length
Twist	2 mm + 0.5 mm/m
Weld position	Narrow side

(1) Exception from standard
 (2) Better than standard Length tolerance -0/+ 50 mm



*This dimensions is maximum when measuring B or H and minimum when measuring T

Stainless Steel Round Tubes

ROUND	Weight (Kg/m) (Metric Sizes)							
	O.D.(mm)	1.00	1.20	1.50	2.00	2.50	3.00	4.00
12.70	0.293	0.346	0.421	0.536	-	-	-	-
13.71	0.318	0.376	0.459	0.586	-	-	-	-
15.88	0.373	0.441	0.540	0.695	-	-	-	-
17.14	0.404	0.479	0.587	0.758	-	-	-	-
19.05	0.452	0.536	0.659	0.854	-	-	-	-
20.00	0.476	0.565	0.659	0.901	-	-	-	-
21.30	0.508	0.604	0.744	0.967	-	-	-	-
22.23	0.531	0.631	0.777	1.012	-	-	-	-
25.40	0.611	0.727	0.898	1.172	1.434	-	-	-
26.67	0.643	0.765	0.945	1.235	1.513	-	-	-
31.75	0.770	0.918	1.136	1.490	1.831	2.160	-	-
33.34	0.811	0.968	1.198	1.573	1.934	2.284	-	-
38.10	0.929	1.109	1.375	1.808	2.229	2.637	-	-
40.50	0.989	1.181	1.465	1.928	2.379	2.817	3.656	-
42.16	1.037	1.238	1.536	2.023	2.498	2.960	3.846	-
48.26	1.192	1.424	1.769	2.334	2.886	3.425	4.467	-
50.80	1.247	1.490	1.852	2.444	3.024	3.591	4.687	-
57.15	-	1.686	2.096	2.769	3.430	4.079	5.339	-
60.33	-	1.782	2.216	2.930	3.631	4.319	5.659	-
63.50	-	1.872	2.329	3.080	3.819	4.545	5.960	7.324
76.20	-	2.254	2.806	3.716	4.614	5.499	7.232	8.914

*Other intermediate dimensions are also available on request.

TOLERANCES (According to ASTM A554)		
OD Size (mm)	OD Tolerance (mm)	Wall Tolerance
12.7 to 25.4	0.10 - 0.25	± 10%
25.4 to 38.1	0.2 - 0.25	± 10%
38.1 to 50.8	0.25 - 0.30	± 10%
50.8 to 63.5	0.30 - 0.36	± 10%
63.5 to 76.2	± 0.36	± 10%

SURFACE CONDITION
Mill Finish / Brushed / Mirror

AVAILABLE SURFACE CONDITION
180 Grit, 220 Grit, 320 Grit, 400 Grit, 600 Grit



ROUND		Weight (Lbs/ft) (Imperial Sizes)						
Imperial sizes (Inches)	O.D. (mm)	20 GA	18 GA	16 GA	14 GA	12 GA	11 GA	7 GA
		0.035"	0.049"	0.065"	0.083"	0.109"	0.120"	0.180"
		0.889 mm	1.25 mm	1.65 mm	2.11 mm	2.77 mm	3.05 mm	4.57 mm
1/2"	12.70	0.179	0.242	0.308	-	-	-	-
0.54"	13.71	0.195	0.263	0.336	-	-	-	-
5/8"	15.88	0.228	0.309	0.397	0.491	-	-	-
0.67"	17.14	0.247	0.336	0.432	0.536	-	-	-
3/4"	19.05	0.276	0.376	0.485	0.604	-	-	-
0.79"	20.00	0.291	0.396	0.512	0.638	-	-	-
0.84"	21.30	0.310	0.424	0.548	0.684	-	-	-
7/8"	22.23	0.324	0.443	0.574	0.717	-	-	-
1"	25.40	0.373	0.510	0.662	0.830	1.059	-	-
1.050"	26.67	0.392	0.537	0.698	0.876	1.119	-	-
1-1/4"	31.75	0.469	0.644	0.839	1.057	1.357	1.479	-
1-5/16"	33.34	0.493	0.678	0.884	1.114	1.431	1.561	-
1-1/2"	38.10	0.566	0.778	1.016	1.283	1.654	1.807	-
1.6"	40.50	0.602	0.829	1.083	1.369	1.766	1.930	-
1-5/8"	41.28	0.614	0.846	1.105	1.397	1.803	1.971	-
1.660"	42.16	-	0.864	1.130	1.428	1.844	2.016	2.903
1.900"	48.26	-	0.993	1.300	1.646	2.130	2.330	3.374
2"	50.80	-	1.047	1.371	1.736	2.248	2.461	3.570
2-1/4"	57.15	-	1.181	1.548	1.963	2.546	2.789	4.061
2-3/8"	60.33	-	1.248	1.636	2.076	2.695	2.952	4.307
2-1/2"	63.50	-	1.315	1.725	2.189	2.843	3.116	4.551
3"	76.20	-	1.583	2.079	2.642	3.437	3.771	5.532

*Other intermediate dimensions are also available on request.

Press Brake Tubes

SQUARE	Weight (Kg/m) (Metric Sizes)					
H x B (mm)	6.00	8.00	10.00	12.00	16.00	18.00
100 x 100	-	23.916	-	-	-	-
120 x 120	-	29.020	-	-	-	-
140 x 140	-	34.123	42.153	-	-	-
150 x 150	-	36.675	45.343	53.811	-	-
180 x 180	-	44.331	54.913	65.294	-	-
200 x 200	-	49.434	61.292	72.950	-	-
250 x 250	46.946	62.194	77.241	92.089	121.182	-
300 x 300	56.516	74.953	93.190	111.227	146.701	164.137
350 x 350	-	87.712	109.139	130.366	172.219	192.845
400 x 400	-	100.471	125.088	149.505	197.738	221.553
500 x 500	-	125.989	156.986	187.782	248.774	278.969

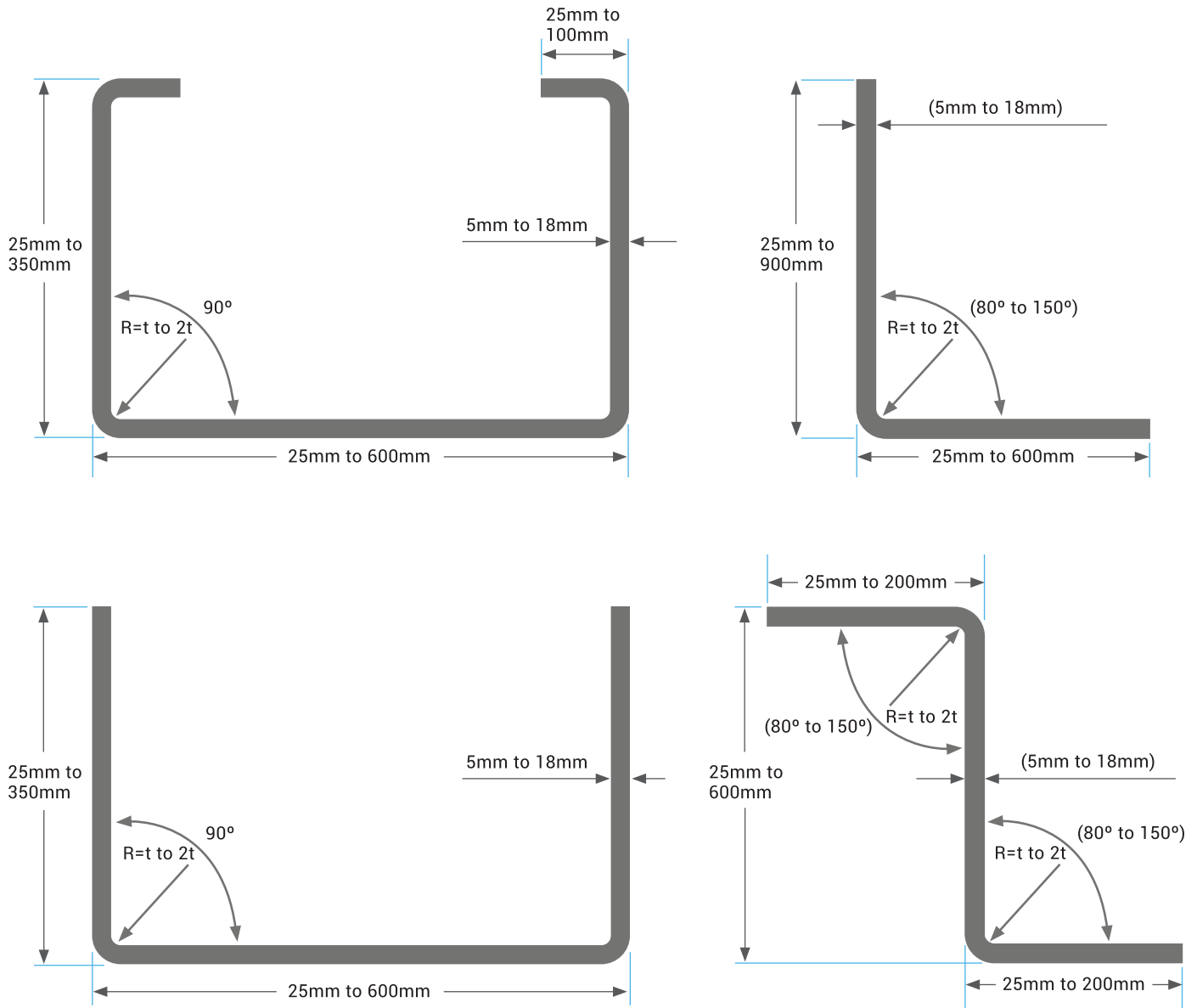
RECTANGULAR	Weight (Kg/m) (Metric Sizes)					
H x B (mm)	6.00	8.00	10.00	12.00	16.00	18.00
200 x 100	-	36.675	-	-	-	-
250 x 100	-	43.055	-	-	-	-
250x 150	-	49.434	61.292	72.950	-	-
300 x 100	-	49.434	-	-	-	-
300 x 150	42.161	55.814	69.267	82.519	-	-
300 x 200	46.946	62.194	77.241	92.089	-	-
350 x 250	56.515	74.953	93.190	111.227	146.701	-
400 x 150	51.730	68.573	85.216	101.658	-	-
400 x 200	56.515	74.953	93.190	111.227	-	-
400 x 300	66.085	87.712	109.139	130.366	172.219	192.845
500 x 300	75.654	100.471	125.088	149.505	197.738	221.553



SQUARE		Weight (Lbs/ft) (Imperial Sizes)					
		0.250"	0.312"	0.375"	0.500"	0.625"	0.750"
Imperial sizes INCHES	Mertic Sizes H X B [mm]	6.350MM	7.925MM	9.525MM	12.700MM	15.875MM	19.050MM
4" x 4"	101.60 x 101.60	-	16.177	-	-	-	-
4.5" x 4.5"	114.30 x 114.30	-	18.331	-	-	-	-
5" x 5"	127.00 x 127.00	-	20.485	24.364	-	-	-
6" x 6"	152.40 x 152.40	-	24.793	29.542	38.712	-	-
8" x 8"	203.20 x 203.20	-	33.409	39.898	52.519	-	-
10" x 10"	254.00 x 254.00	33.841	42.025	50.253	66.327	82.061	-
12" x 12"	304.80 x 304.80	40.744	50.640	60.608	80.134	99.320	118.168
14" x 14"	355.60 x 355.60	-	59.256	70.964	93.941	116.580	138.879
16" x 16"	406.40 x 406.40	-	67.872	81.319	107.748	133.839	159.590
18" x 18"	457.20 x 457.20	-	76.488	91.675	121.556	151.098	180.301
20" x 20"	508.00 x 508.00	-	85.104	102.030	135.363	168.357	201.012

RECTANGULAR		Weight (Lbs/ft) (Imperial Sizes)					
		0.250"	0.312"	0.375"	0.500"	0.625"	0.750"
Imperial sizes INCHES	Mertic Sizes H X B [mm]	6.350MM	7.925MM	9.525MM	12.700MM	15.875MM	19.050MM
8" x 4"	203.20 x 101.60	-	24.793	-	-	-	-
10" x 4"	254.00 x 101.60	-	29.101	-	-	-	-
12" x 4"	304.80 x 101.60	-	33.409	-	-	-	-
12" x 6"	304.80 x 152.40	30.389	37.717	45.075	59.423	-	-
12" x 8"	304.80 x 203.20	33.841	42.025	50.253	66.327	-	-
14" x 10"	355.60 x 254.00	40.744	50.640	60.608	80.134	99.320	-
16" x 6"	406.40 x 152.40	37.293	46.333	55.431	73.230	-	-
16" x 8"	406.40 x 203.20	40.744	50.640	60.608	80.134	-	-
16" x 12"	406.40 x 304.80	47.648	59.256	70.964	93.941	116.580	138.879
20" x 12"	508.00 x 304.80	54.552	67.872	81.319	107.748	133.839	159.590
22" x 14"	558.80 x 355.60	61.455	76.488	91.675	121.556	151.098	180.301

Stainless Steel Profiles



TOLERANCES

All dimensions are in mm

Profile outside dimensional tolerance ± 2 mm

Angular tolerance $\pm 2^\circ$

Straightness 0.15% of length

Twist 1° per metre length

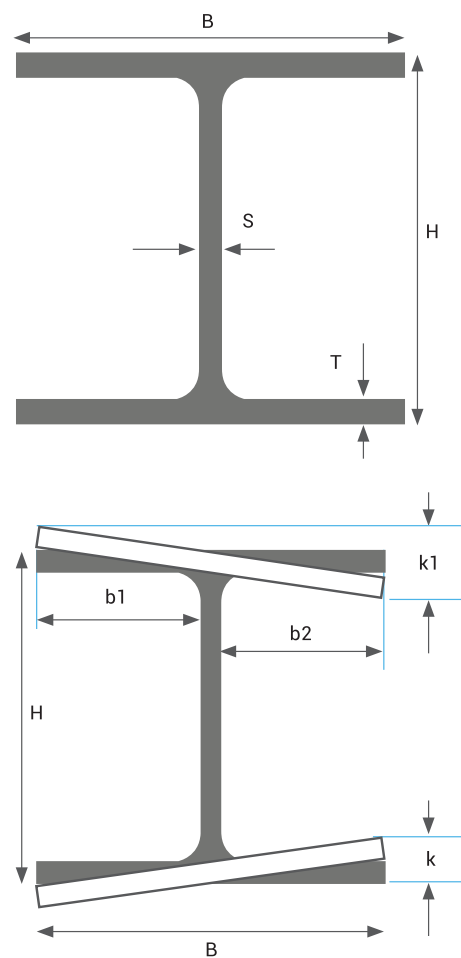
Internal radius typically t to $2t$, where t =material thickness

The profile dimensions and angular accuracy shall be measured at a point not less than 150mm from end

*Other intermediate dimensions are also available on request.

Stainless Steel Customized Welded I-Beams & H-Beams

	H	B	TW	TF	Kg/m
IPE 200	200	100	6	8	21.36
IPE 270	270	135	8	10	37.13
IPE 330	330	160	8	12	49.68
IPE 360	360	170	8	12	53.47
IPE 450	450	190	10	15	78.21
IPE 500	500	200	10	15	84.53
IPE 600	600	220	12	20	122.61
HEB 120	120	120	8	10	25.28
HEB 160	160	160	8	12	38.93
HEB 220	220	220	10	15	67.15
HEB 280	280	280	10	20	107.44
HEB 300	300	300	10	20	115.34
HEA 160	152	160	6	10	31.54
HEA 200	190	200	8	10	42.34
HEA 240	230	240	8	12	58.52
HEA 280	270	280	8	12	68.64
HEA 300	290	300	8	15	87.53
HEA 340	330	300	10	16	99.38
HEA 400	390	300	10	20	122.45



Tolerances according to BS EN 10034:1993

Section Height	Height (mm)	Tolerance (mm)
H	$H \leq 180$	-2.0/+3.0
	$180 < H \leq 400$	-2.0/+4.0
	$400 < H \leq 700$	-3.0/+5.0

Flange Width	Width (mm)	Tolerance (mm)
B	$B \leq 110$	-1.0/+4.0
	$110 < B \leq 210$	-2.0/+4.0
	$210 < B \leq 325$	-4.0/+4.0

Web Thickness	Thickness (mm)	Tolerance (%)
S	$S < 7.0$	± 0.70
	$7.0 < S \leq 10.0$	± 1.0
	$10.0 < S \leq 20.0$	± 1.50
	$20.0 < S \leq 40.0$	± 2.0

Flange Thickness	Thickness (mm)	Tolerance (mm)
T	$T < 6.5$	-0.5/+1.5
	$6.5 \leq T \leq 10.0$	-1/+2
	$10.0 \leq T \leq 20.0$	-1.5/+2.5
	$20.0 \leq T \leq 30.0$	-2/+2.5

Out Of Square	Flange Width B (mm)	Tolerance (mm) Max.
k+k1	$B \leq 110$	1.5
	$B > 110$	2% OF B (Max 6.5MM)

Web Off Centre	Flange Width B (mm)	Tolerance (mm) Max.
(b1-b2)/2	$B \leq 110$	2.5
	$110 < B \leq 325$	3.5
	$B > 325$	5.0

Straightness Tolerance	0.25% of Total Length
------------------------	-----------------------

*Other intermediate dimensions are also available on request.

INOXIDABLE

 **Gual**

INNOVACIÓN

TEL. (+34) 93 820 38 05
(+34) 902 316 304
gualsteel@gualstainless.com
www.gualsteel.com



Corporate Office:

401, Elenza Vertex, Opp. Zainobiya,
Sindhuhavan Road,
Ahmedabad - 380059, Gujarat, India.
Ph : +91-79-4898 3251/3253/3254

Works:

Survey No. 69/2, Opp. Madhu Textile,
Ahmedabad-Mehsana Highway,
Village: Chandarda, Taluka: Kadi
Dist.: Mehsana, Gujarat, India

Email: raajtubes@raajtubes.com | **Domestic Inquiry:** domestic@raajtubes.com | **Export Inquiry:** export@raajtubes.com

www.raajtubes.com

